

32) F Shadblow Serviceberry, *Amelanchier canadensis*:

- Shrub provides berries for birds, which ripen in summer
- Provides larval food for the Red-spotted Purple butterfly
- Has white flowers
- Shows good fall color

33) Sweet Pepperbush, *Clethra alnifolia*

- Shrub has white flower spikes
- Flowers provide nectar for butterflies

34) F Gray Dogwood, *Cornus racemosa*:

- Shrub provides larval food for Spring Azure and Summer Azure butterflies
- Also provides white berries for fall birds
- Leaves turn purplish-red in fall

Other native plants that can be found in our garden: Woody plants:

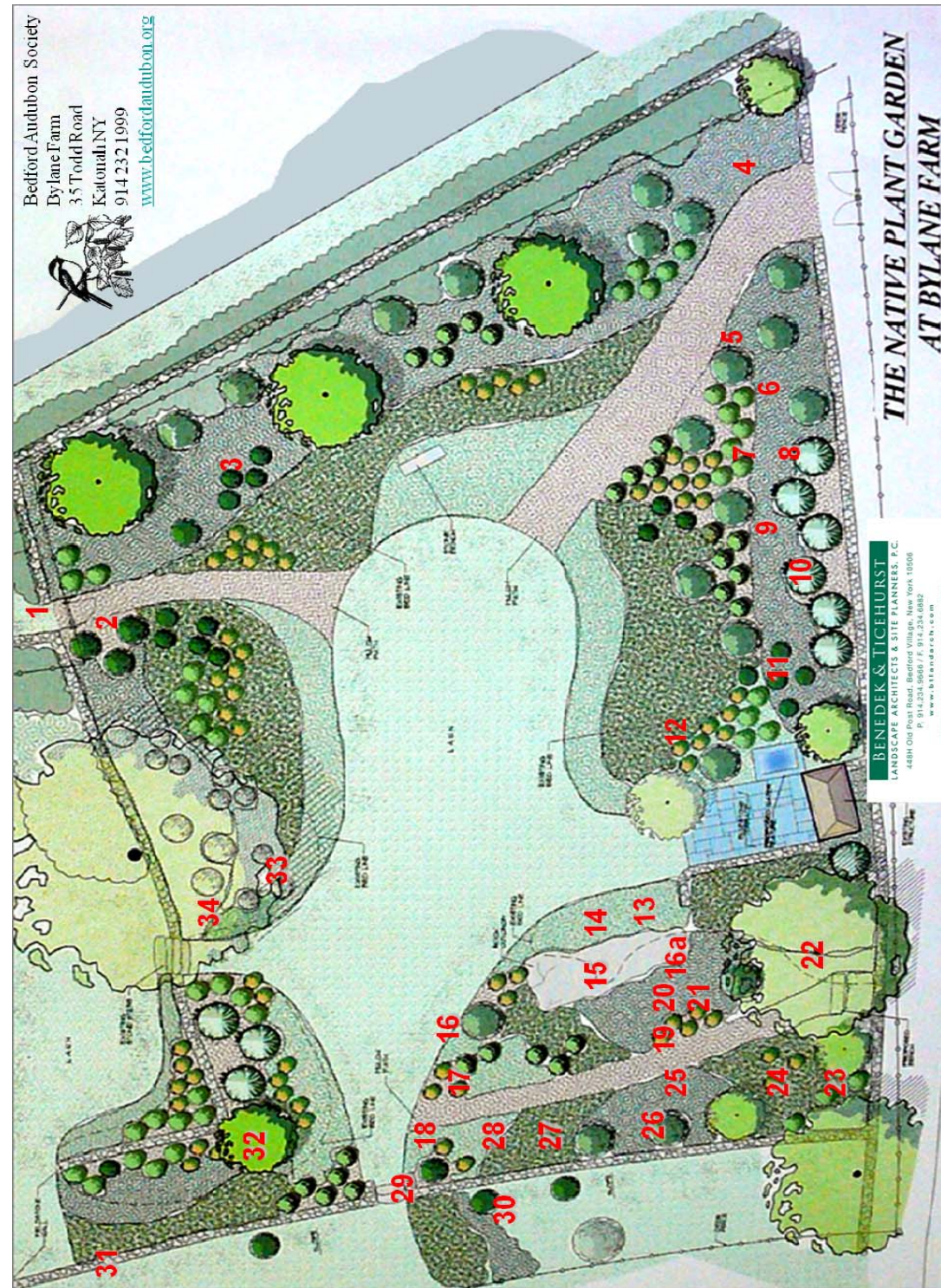
- **Bearberry, *Arctostaphylos uva-ursi***
- **Pipevine, *Aristolochia macrophylla***
- **Trumpet Vine, *Campsis radicans***

Herbaceous Perennials:

- **Northern Maidenhair Fern, *Adiantum pedatum***
- **Jack-in-the Pulpit, *Arisaema triphyllum***
- **Eastern Bleeding Heart, *Dicentra eximia***
- **Twinleaf, *Jeffersonia diphylla***
- **Virginia Bluebells, *Mertensia virginica***
- **Wild Blue Phlox, *Phlox divaricata***
- **Garden Phlox, *Phlox paniculata***
- **Moss Phlox, *Phlox subulata***
- **Mayapple, *Podophyllum peltatum***
- **New York Fern, *Thelypteris noveboracensis***

Remember, lawns are boring and do nothing for a healthy ecosystem, so think about making a change. Thank you for spending some time here at Bylane Farm!

For additional information please see our website at www.bedfordaudubon.org or our office library, and contact the office for any further questions. Also feel free to check out our many public programs, come over and have some more fun!



Bylane's Native Plant Garden: Self Identification Walk

Join Bedford Audubon on our mission to phase out exotic garden plants and transition to beautiful natives. Native plants are easier to take care of and provide important wildlife habitats. Bylane is an oasis for pollinators, and hosts over 60 species of butterflies alone!

Did you know that 90% of insects depend on native plants? If parent birds cannot find insects to feed their young, what will happen to bird populations?



Carol Gracie

Orange Milkweed

Do you want to bring butterflies, birds, and other wildlife to your back yard and help provide needed habitat for them? Here you can learn about plants attractive to wildlife, and plants you can plant in your garden. Let's get started!...

Color Code for this pamphlet:

- B**- attracts birds
- M**- attracts mammals
- F**- attracts butterflies
- H**- attracts hummingbirds

1) Northern Bayberry, *Morella pensylvanica* or *Myrica pensylvanica*: (found outside the garden fence)

- Shrub provides grey colored fruit for fall and winter birds
- Holds leaves through winter, often until new ones emerge in spring
- Adaptable to dry or wet sites
- Almost completely deer proof

2) F Spicebush, *Lindera benzoin*:

- Shrub provides larval food for Spicebush Swallowtail butterfly
- Has small yellow flowers
- Provides red berries for birds
- Both male and female plants are needed for fruit

3) M Inkberry, *Ilex glabra*:

- Shrub with evergreen foliage which provides cover for birds
- Provides black berries for winter birds
- Both male and female plants are needed for fruit

4) M Black Tupelo, *Nyssa sylvatica*:

- Tree provides oblong bluish black berries in fall for birds and mammals
- Has spectacular yellow, orange, scarlet to purple fall foliage

5) Swamp Milkweed, *Asclepias incarnata*:

- Excellent butterfly nectar plant
- Larval food plant for Monarch butterfly
- Has a mass of small, fragrant purple or pink flowers in early-mid summer

6) M F American Holly, *Ilex opaca*:

- Provides evergreen cover
- Provides bright red berries for songbirds, turkey
- Both male and female plants are needed to produce fruit
- Larval food for Henry's Elfin butterfly

7) Great Blue Lobelia, *Lobelia siphilitica*:

- Provides hummingbird nectar
- A late blooming summer perennial with dark or light blue tubular flowers

8) M Common Winterberry, *Ilex verticillata*:

- Shrub provides bright red berries in fall and winter for winter birds and small mammals
- Both male and female plants are needed for fruit
- Has attractive yellow fall color

9) M F American Cranberry Viburnum, *Viburnum trilobum*:

- Shrub provides nectar for butterflies
- Also provides showy red berries for birds and other wildlife, which often persist into winter
- Has white flowers
- Also has yellow to red/purple fall color

10) Red Chokeberry, *Photinia pyrifolia*: (formerly *Aronia arbutifolia*)

- A suckering shrub with brilliant fall foliage
- Has white flowers in spring
- Produces an astringent red fruit which birds eat when fruit supplies are low (not their first choice)

11) M Common Elderberry, *Sambucus canadensis*:

- Shrub provides sweet black berries highly attractive to songbirds

12) Mountain-laurel, *Kalmia latifolia*:

- Provides nectar for hummingbirds in spring
- Provides evergreen cover
- Has showy pinkish-white spring flowers

13) Orange Milkweed, *Asclepias tuberosa*:

- Excellent butterfly nectar plant
- Larval food for Monarch butterfly
- Has many small bright orange blooms

14) Little Bluestem, *Schizachyrium scoparium*:

- Grass provides larval food for several Skipper butterfly species
- Has blue-green foliage
- Drought resistant

15) Wild Columbine, *Aquilegia canadensis*:

- Excellent hummingbird nectar plant
- Has red tubular flowers

16) M Northern Wild-Raisin, *Viburnum nudum* (variety *cassinoides*) & 16a) Southern-Wild Raisin, *Viburnum nudum* (variety *nudum*):

- Has showy white flowers
- Flowers are followed by fruit which begins pink and changes to black in autumn
- Provides fruit for birds and other wildlife

17) M F H Lowbush Blueberry, *Vaccinium angustifolium* & 18) Highbush Blueberry, *Vaccinium corymbosum*:

- Shrubs provide nectar for hummingbirds and butterflies
- Provides larval food for Striped Hairstreak and "Northern" Spring Azure butterflies
- Provides fruit for birds and mammals

19) Black Chokeberry, *Photinia melanocarpa* (formerly *Aronia melanocarpa*):

- A suckering shrub with brilliant fall foliage
- Has white spring flowers
- Provides astringent black fruit which birds eat when fruit supplies are low (not their first choice)

20) Pearly Everlasting, *Anaphalis margaritacea*:

- Larval food for American Lady butterfly
- Has clusters of small white daisy-like flowers

21) New Jersey Tea, *Ceanothus americanus*:

- Shrub provides larval food for Spring Azure butterfly
- Leaves have been used to make tea
- Drought resistant

22) M Sugar Maple, *Acer saccharum* (here you see a majestic old specimen):

- Tree has lovely orange/yellow/red fall color
- Provides sap for maple syrup
- Also provides some food for birds

23) M F Flowering Dogwood, *Cornus florida*:

- Tree provides red berries for birds
- Also provides larval food for Spring Azure butterfly
- Has showy white spring flowers
- Shows red-reddish purple fall color

24) Joe-Pye Weed, *Eupatorium purpureum*:

- Excellent butterfly nectar plant
- Has long blooming small dusky pink flowers

25) Eastern Purple Coneflower, *Echinacea purpurea*:

- Excellent butterfly nectar plant
- Has large long lasting purple flowers

26) F Northern Arrowwood, *Viburnum dentatum*:

- Shrub provides quickly disappearing blue-black berries for fall birds
- Also provides butterfly nectar

27) H Oswego-Tea, *Monarda didyma*:

- Excellent butterfly and hummingbird nectar plant
- Has clusters of bright red tubular flowers

28) Northern Blue Flag, *Iris versicolor*:

- Good butterfly nectar plant
- Has large showy blue/violet flowers with yellow
- Tolerates wet soil well

29) Spotted Jewelweed, *Impatiens capensis*:

- Excellent hummingbird nectar plant
- Tolerates wet to moist soils
- Has red-spotted, orange tubular flowers (July-Oct)

30) Red-Osier Dogwood, *Cornus sericea*:

- Shrub provides white berries for birds

31) Alternate-leaved Dogwood, *Cornus alternifolia*:

- Shrub provides blue berries for birds